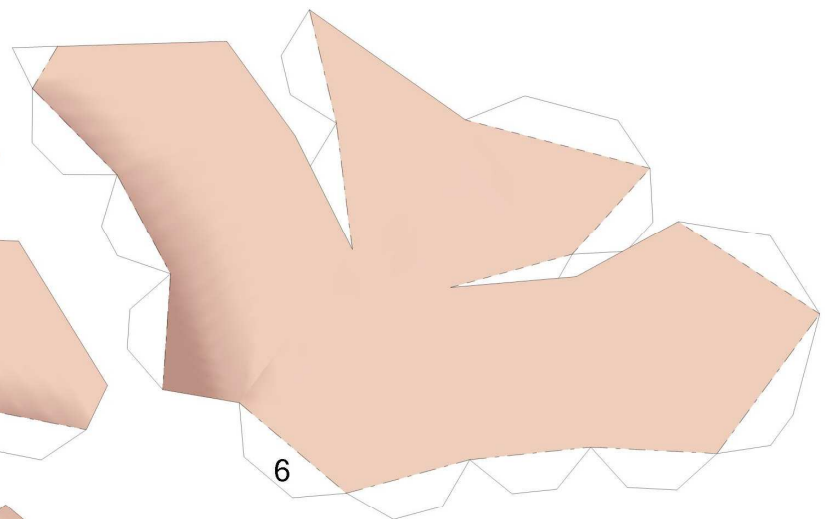
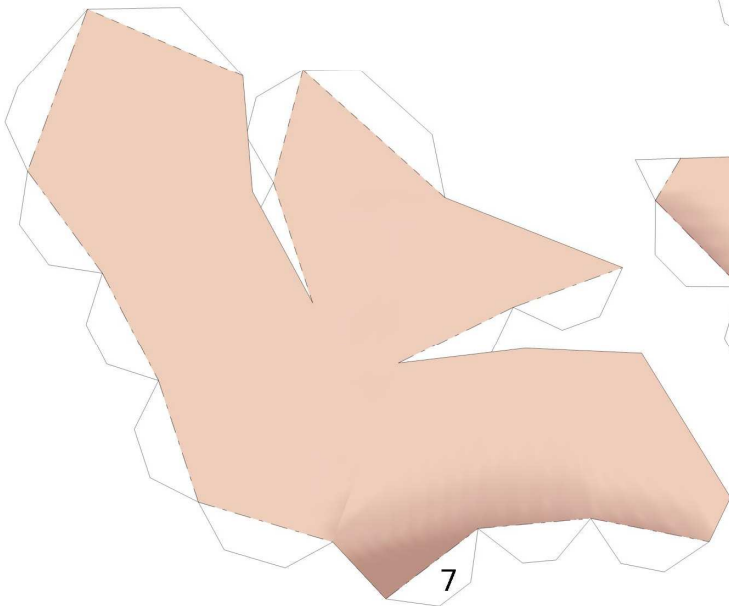
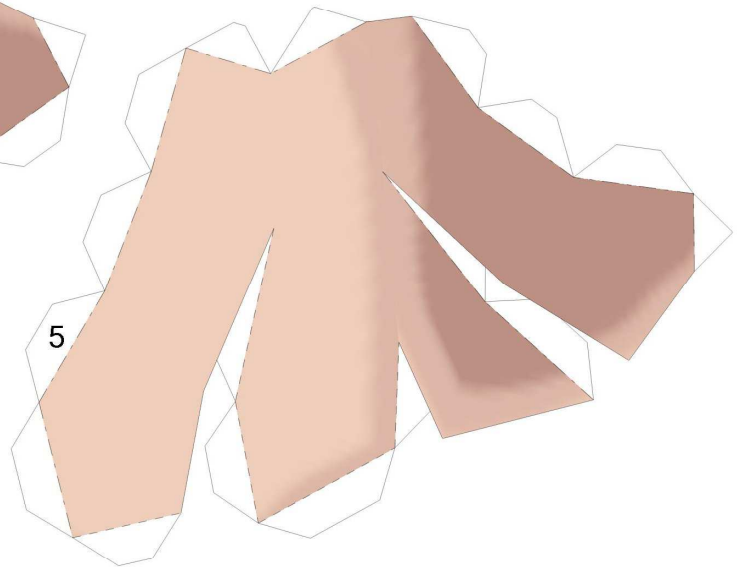
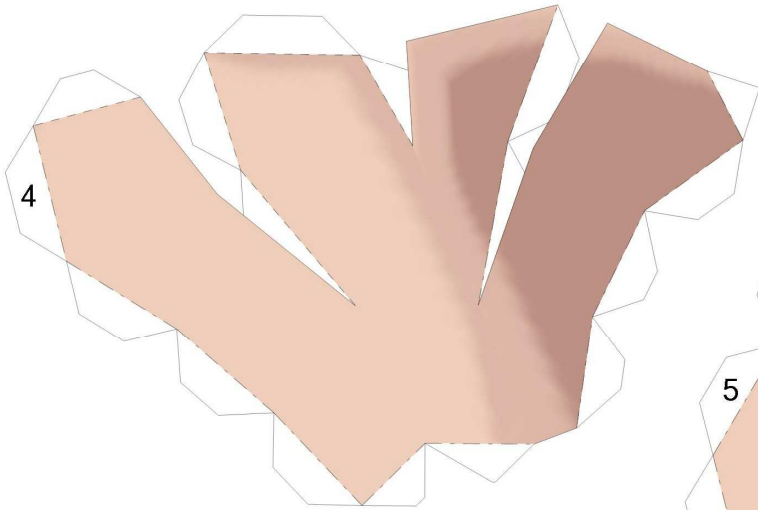
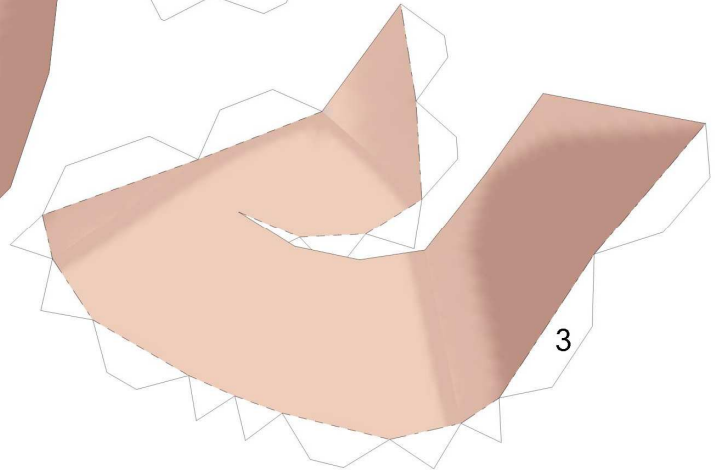
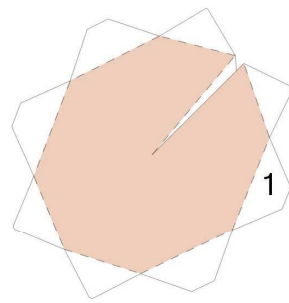
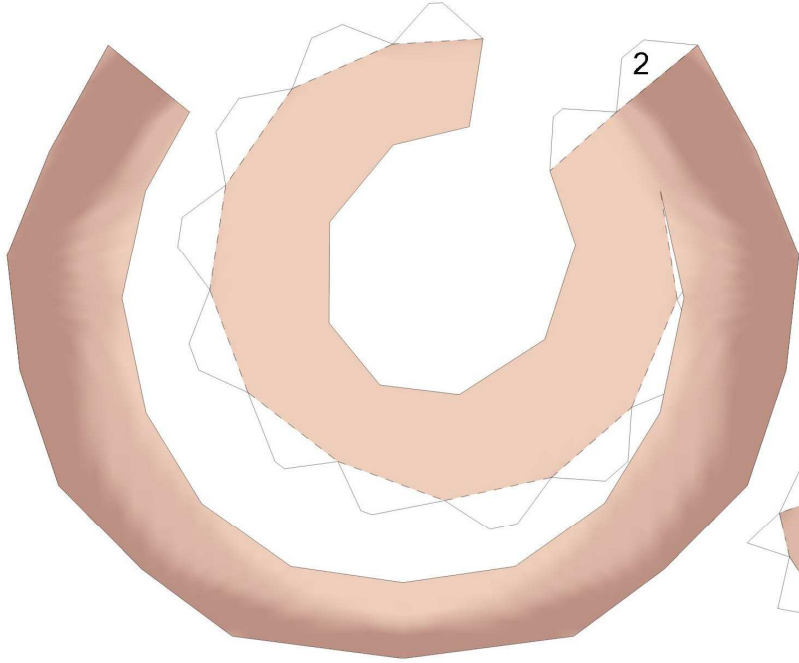




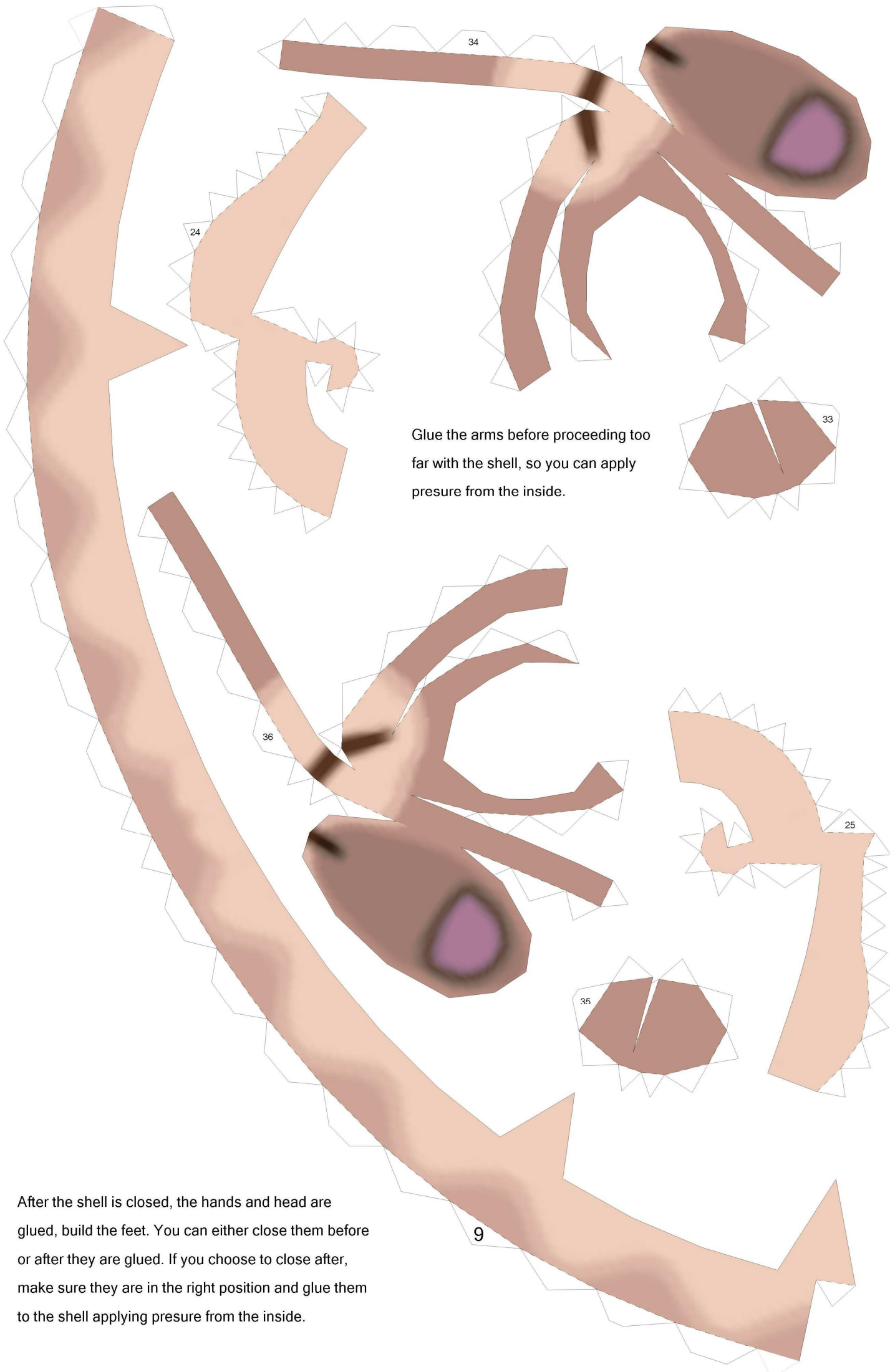
Togepi V2

By LuIS

Paper Pokés
www.pokemonpapercraft.net

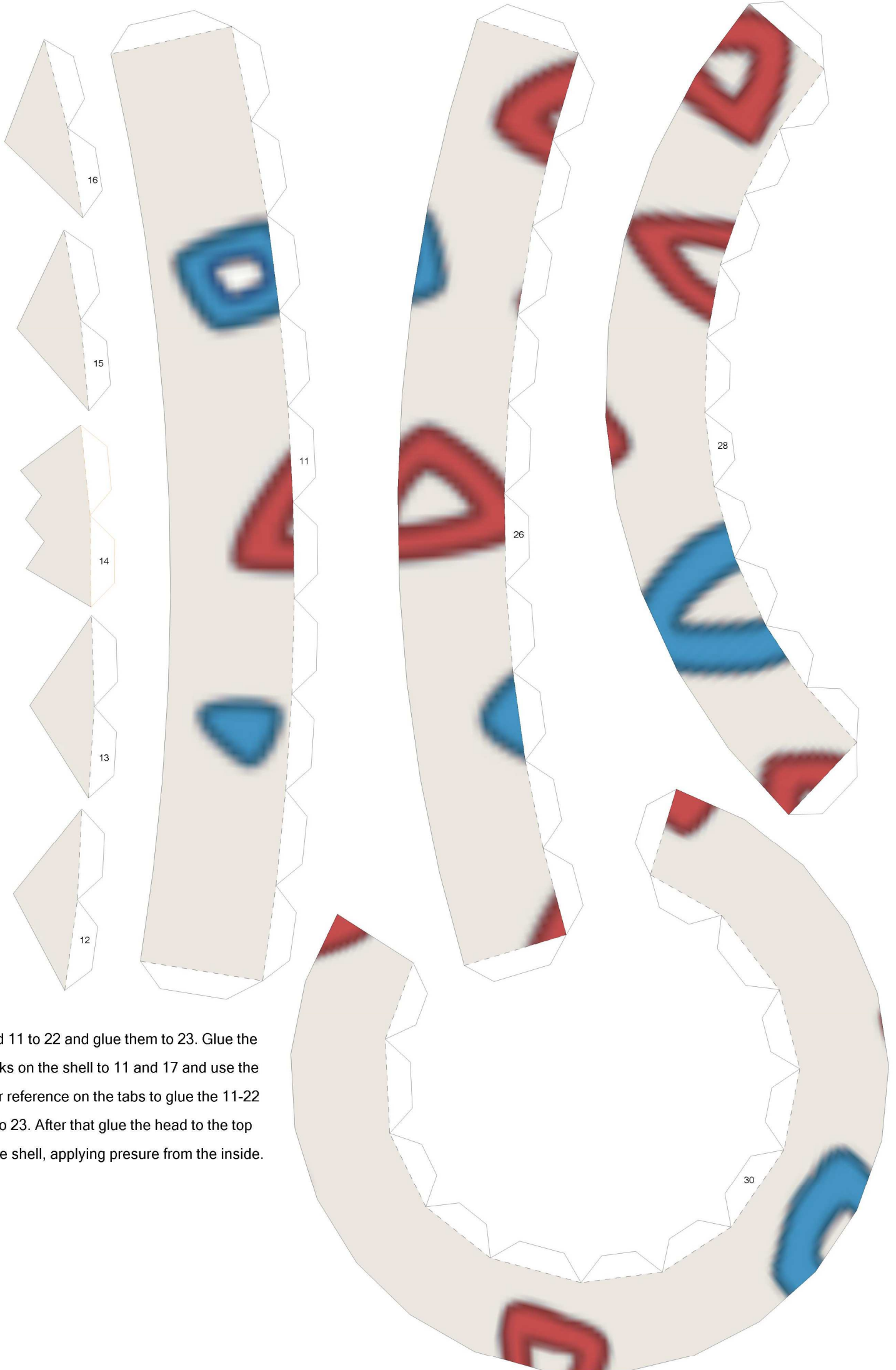


Start at the top of the head, add the spikes as you go. Close the head at the bottom.

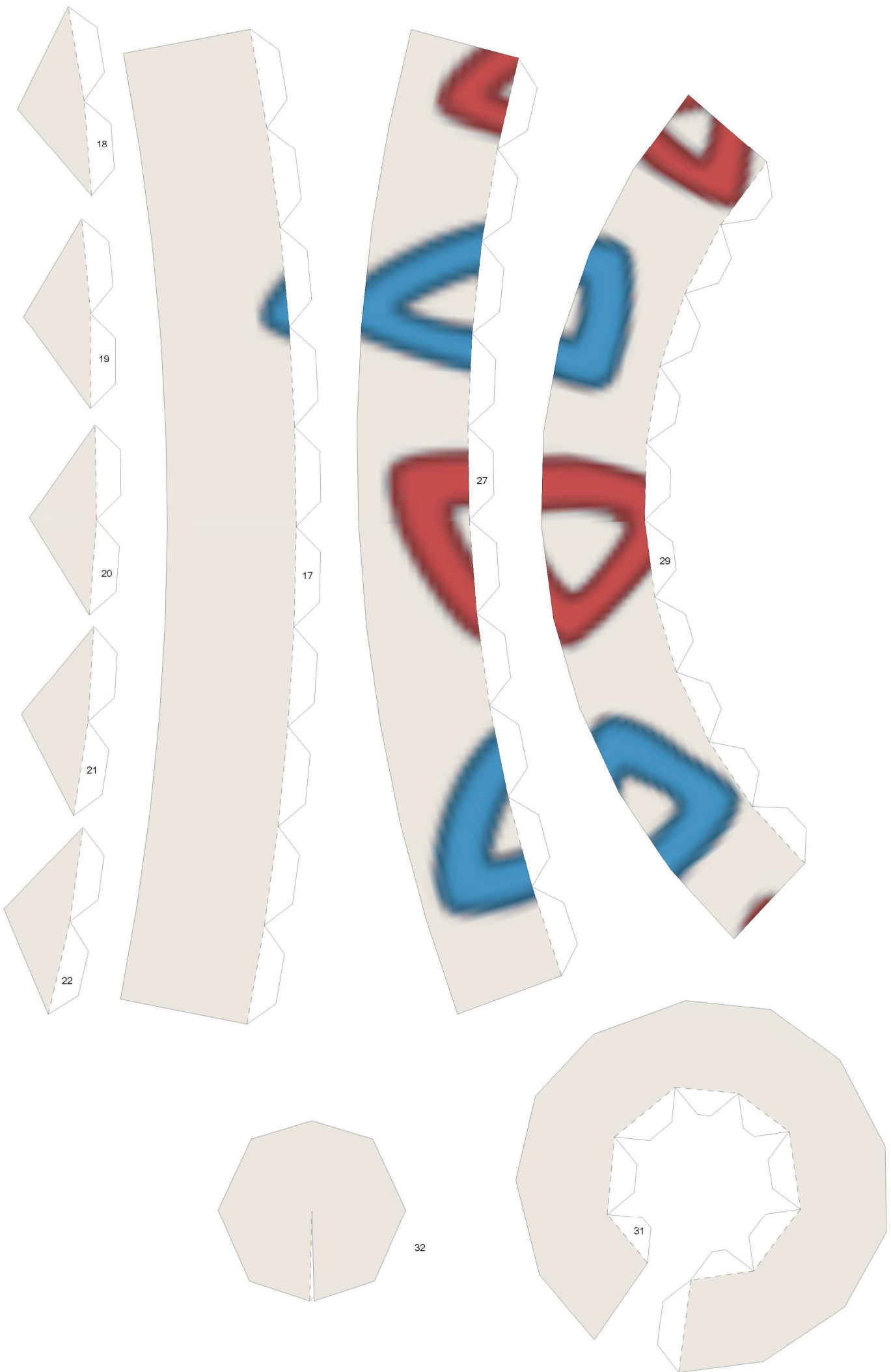


Glue the arms before proceeding too far with the shell, so you can apply pressure from the inside.

After the shell is closed, the hands and head are glued, build the feet. You can either close them before or after they are glued. If you choose to close after, make sure they are in the right position and glue them to the shell applying pressure from the inside.



Build 11 to 22 and glue them to 23. Glue the cracks on the shell to 11 and 17 and use the color reference on the tabs to glue the 11-22 set to 23. After that glue the head to the top of the shell, applying pressure from the inside.



Close the shell at the bottom.

